



HortiMaX CropView

- Lets you monitor plant responses in high resolution 24/7
- Integrates seamlessly with HortiMaX controllers and Synopta
- Allows you to improve crop production

Keep an eye on your crop 24/7, from anywhere in the world



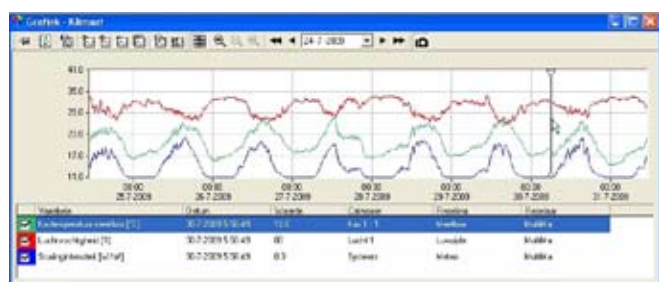
CropView is a unique solution that allows you to keep track of your crop's development. CropView combines modern digital photography and computerised environmental control, so you can analyse both your crop's current condition and its growth over time. This is all done in unrivalled detail, and available whenever and wherever you want. In-depth field tests have already shown that CropView can result in substantial cost savings in both ornamental and vegetable production.

Integrates seamlessly with HortiMaX controllers and Synopta

By combining HortiMaX environmental control technology and high-resolution digital photography, you're able to monitor and analyse your crop 24 hours a day. The camera takes detailed and overall photographs of your crop plants and stores these, so you can view current and past images of your plants' responses in razor-sharp detail.

Play images like a film

The images of your crop can be played forward or backward (at the desired zoom level) in rapid succession, providing a film-like impression of your plants' responses. In this way, you're able to watch 24 hours of crop development in just 30 seconds.



Allows you to improve crop production

Based on the crop images and corresponding climate data, you can take strategic measures to improve crop production. Nothing escapes the camera's zoom lens (macro and wide-angle lenses are optional); even condensation (encouraging fungal growth), pollination or minute differences in flowering or stem length (crucial in rose production) are captured in perfect detail, and can be analysed and corrected using constantly updated graphs that run synchronously with the images. Remotely evaluating crop development has

never before been so effortless and convenient. CropView is a user-friendly solution that helps you achieve the best possible results in a glasshouse environment.

The benefits of HortiMaX CropView:

- Provides razor-sharp photos of your crop's development and is an indispensable tool for monitoring and analysing your crop remotely;
- Provides historical 24/7 data registration with detailed, high resolution images;
- Easy to integrate with HortiMaX control computers and Synopta;
- Accessible via the Internet, so available worldwide;
- Takes photos in true colours and plays images synchronously with climate data graphs;
- Automatically stores images and exports images in JPG format;
- Lets you compare images of different periods or crop cameras;
- Enables you to keep a close eye on your crop's development;
- Easy to operate using graphs or a keyboard.